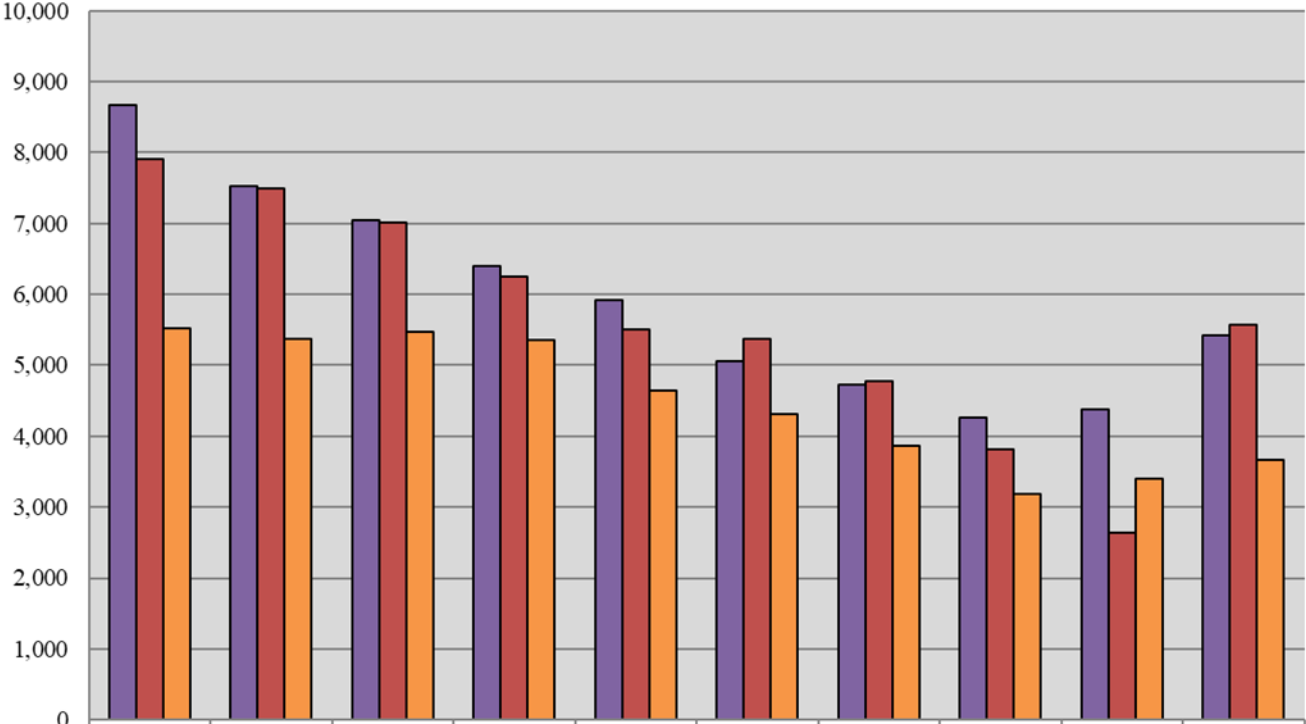


Superior Court Criminal 10-Year Caseload Trend



	2013	2014	2015	2016	2017	2018	2019	2020	2021	2022
Filings	8,671	7,532	7,042	6,402	5,921	5,056	4,719	4,258	4,385	5,427
Dispositions	7,908	7,497	7,016	6,252	5,513	5,379	4,776	3,811	2,633	5,576
VOP Filings	5,520	5,378	5,465	5,358	4,639	4,307	3,865	3,179	3,402	3,673

Fiscal Year

VOP = Violation of Probation